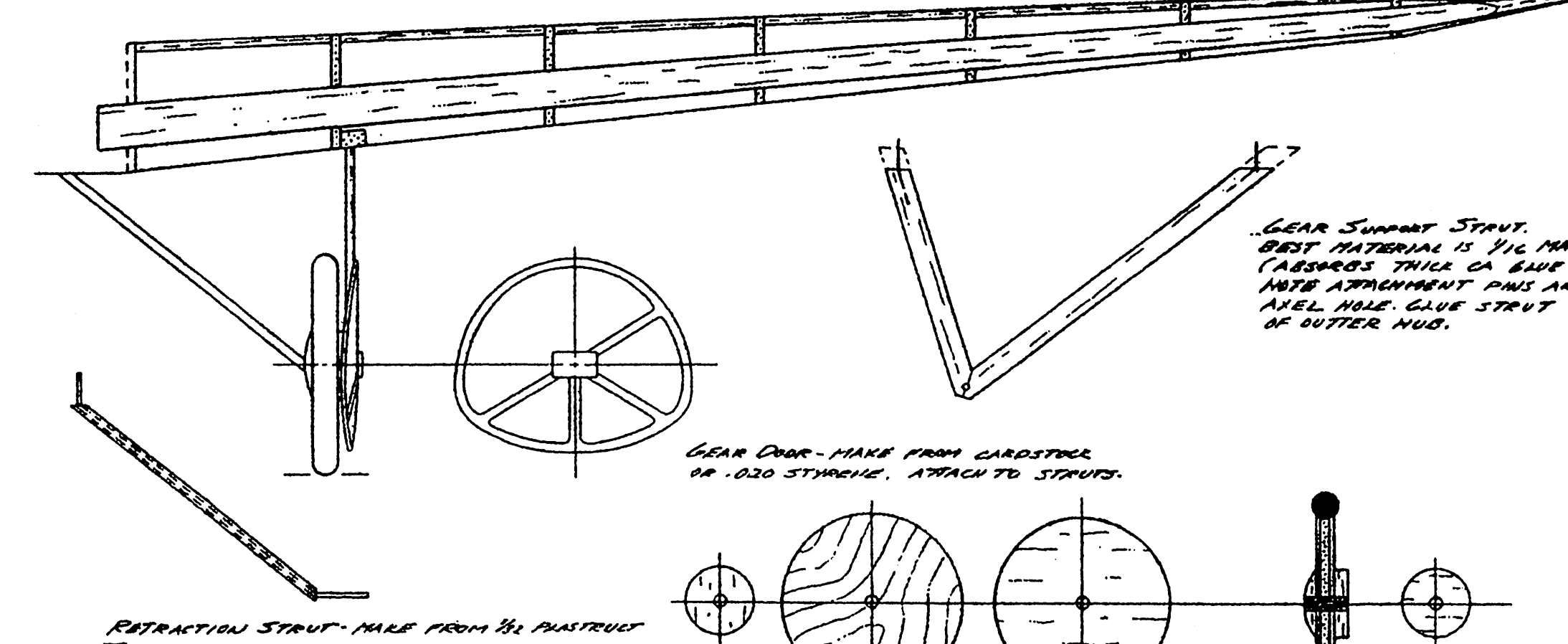
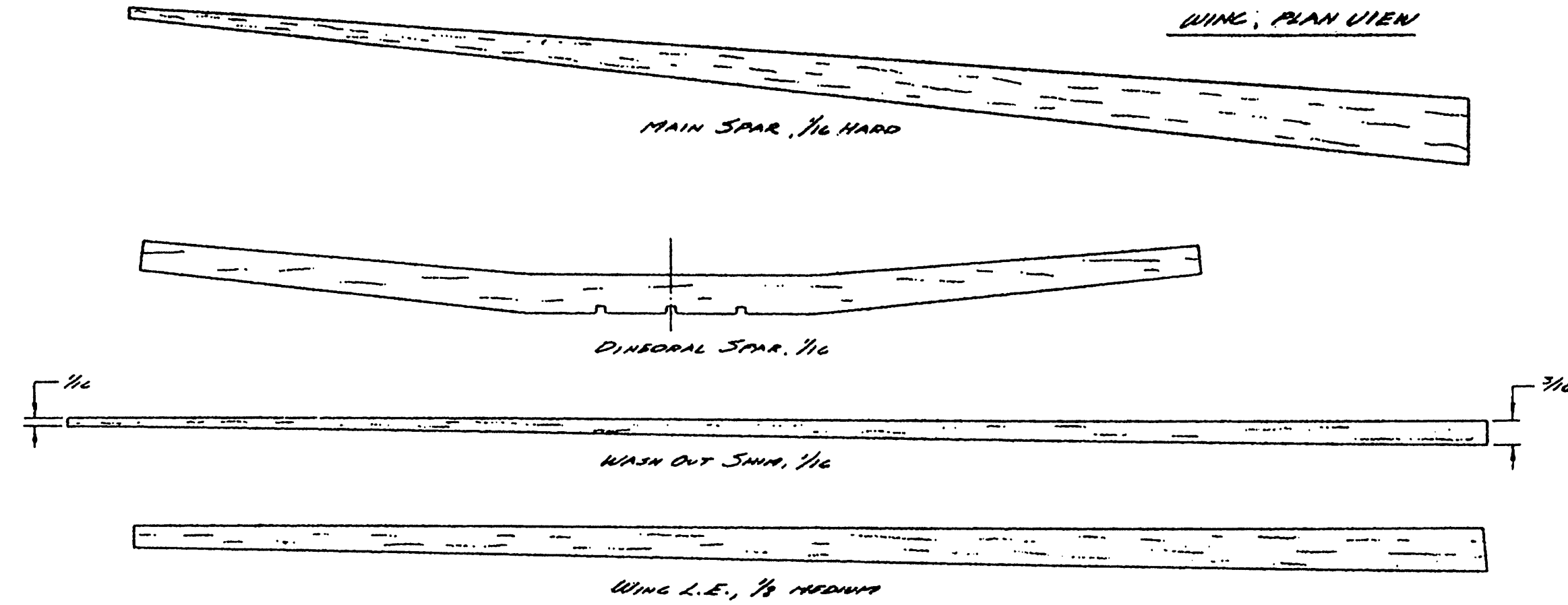
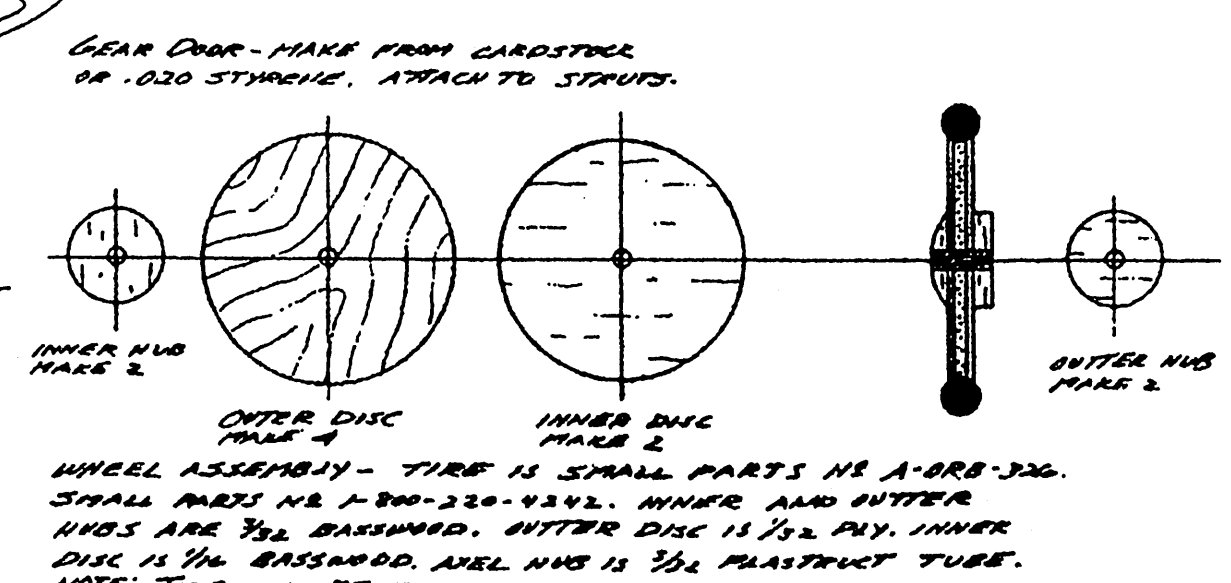


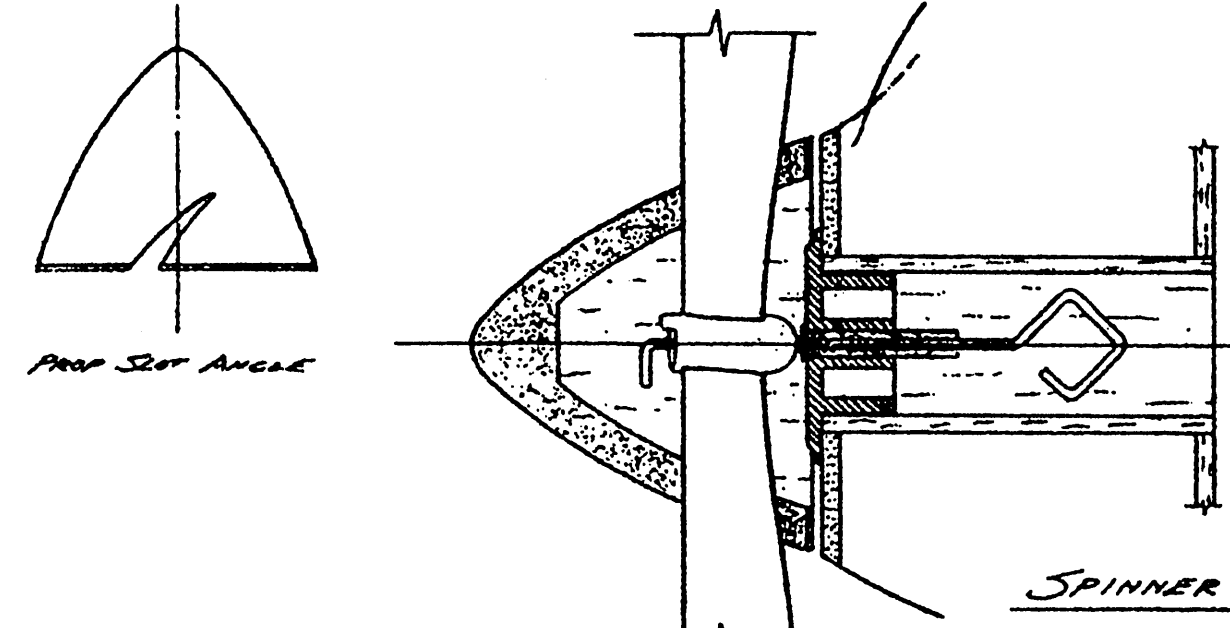
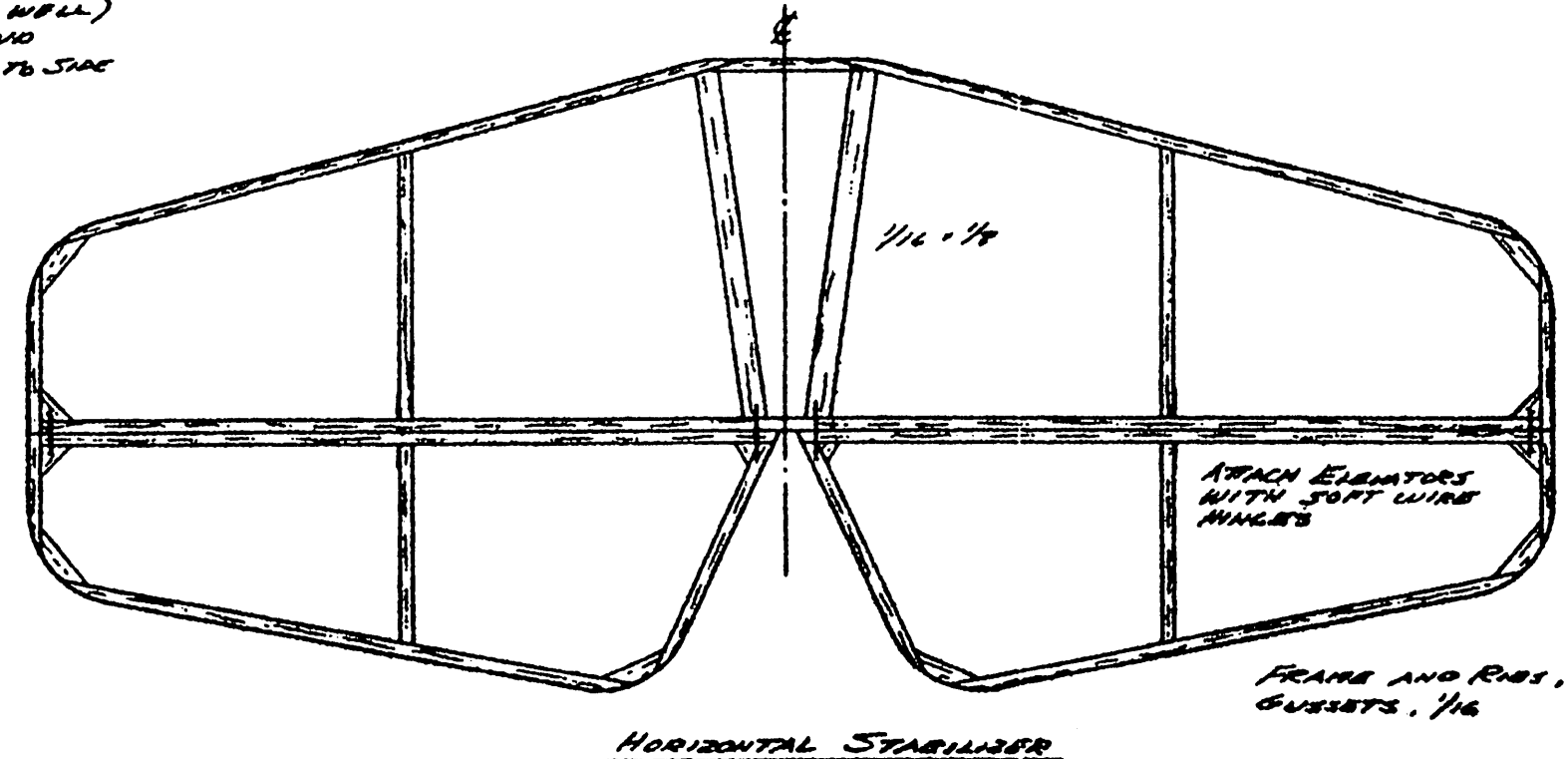
WING RIBS, 1/32 or 1/16 SOFT BALSAs



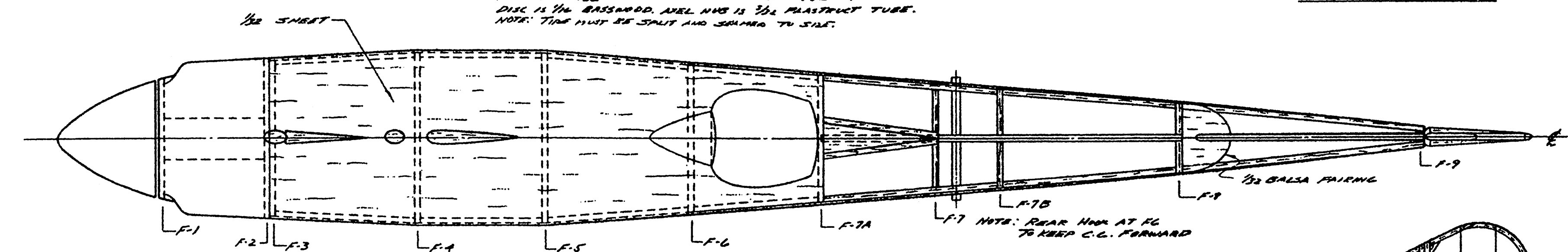
GEAR SUPPORT STRUT. BEST MATERIAL IS 1/16 MANNING. (ASSURES THREE CA BAKE WELD.) ALSO ATTACHMENT PINS AND NUTS. GLUE STRUT TO SIDE OF OUTER NUB.



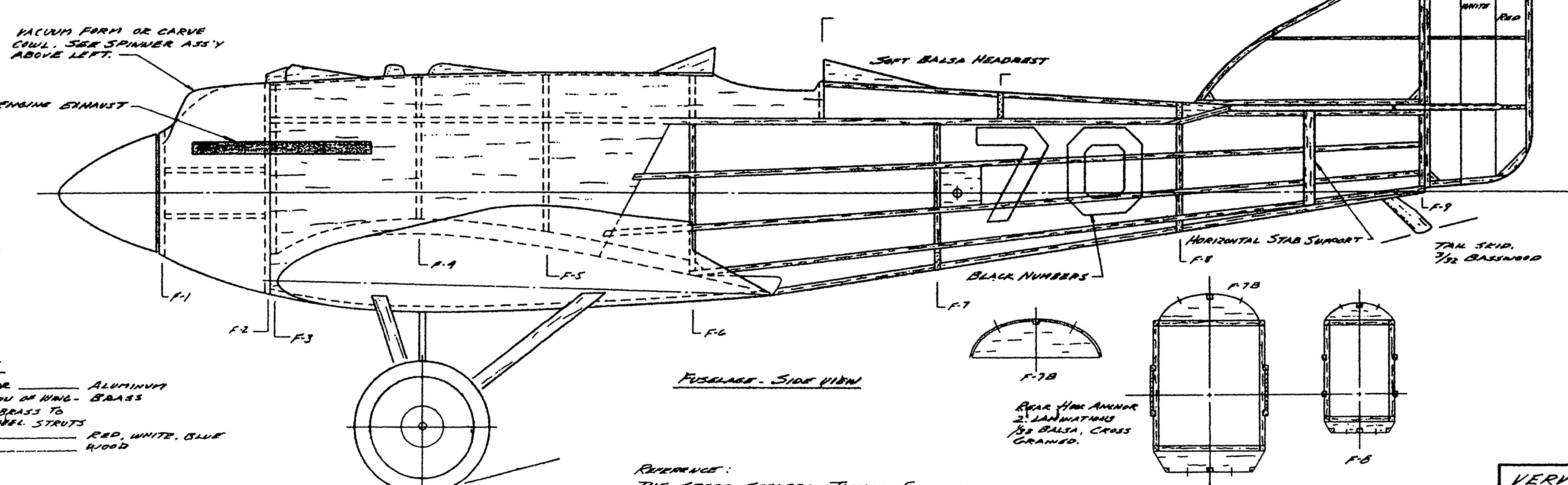
WHEEL ASSEMBLY - TIRE IS SMALL PARTS NO A-088-326. SMALL PARTS NO A-800-230-422V. INNER AND OUTER NUBS ARE 3/16 BASSWOOD. OUTER DISC IS 3/16 PLY. INNER DISC IS 1/16 BASSWOOD. NUT AND IS 3/16 PLASTIC TUBE. NOTE: TIRE MUST BE SPLIT AND BOLDED TO SIDE.



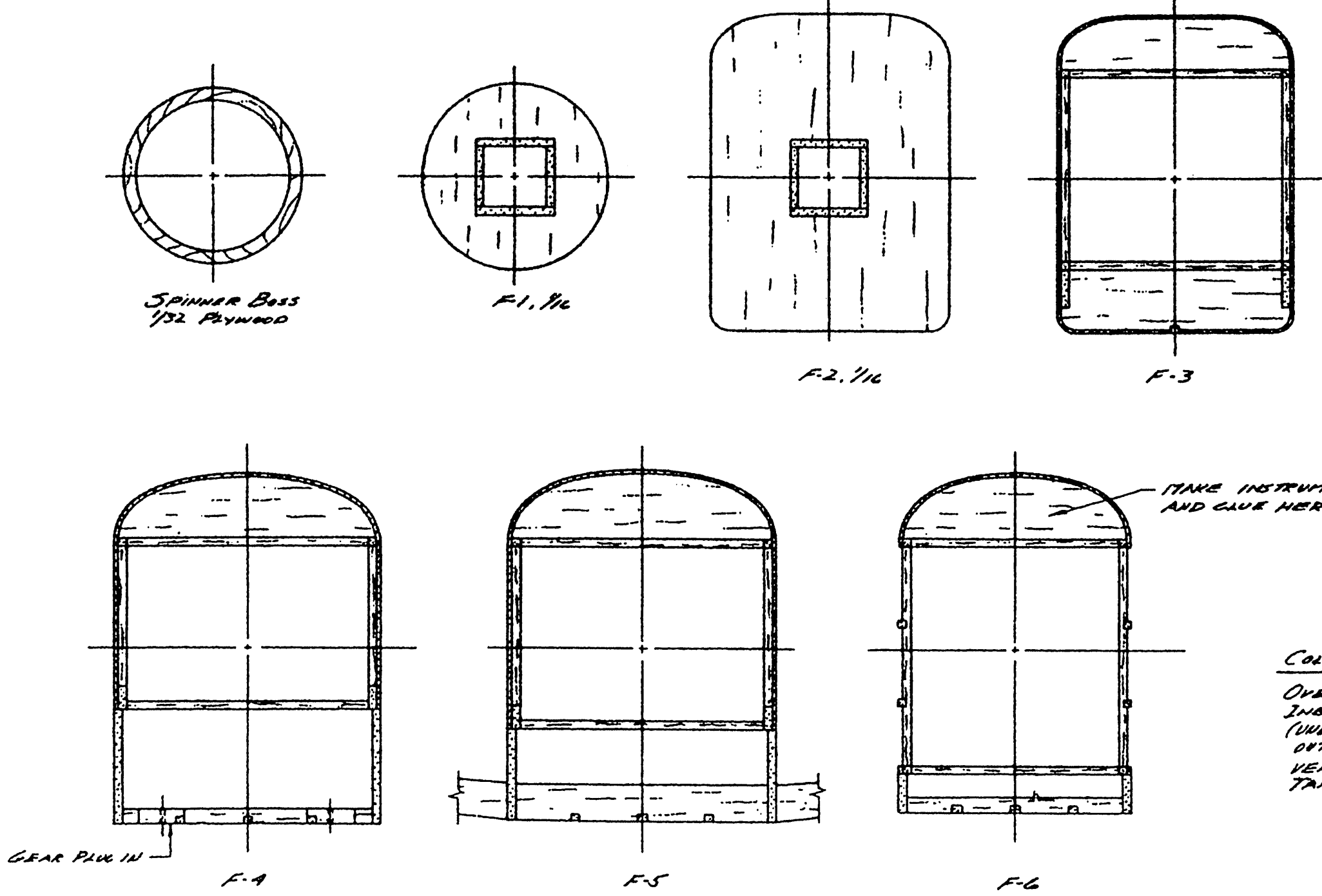
SPINNER AND PROP ASSEMBLY: PARTS NEEDED. PROP, 7 IN., PECK MINYMERS PAD2; PECK IN-LINE NUTS BUCK BEARING, W8002; PECK 1/8" D. BRASS WASHER. MAKE A SQUARE BALSAs TUBE, 1/2 IN. INSIDE DIMENSION, FROM 1/16 BALSAs. ASSEMBLE TO NUTS FIRST AS SHOWN, FILL OR SAND THE FRONT END OF NUTS BUCK, AND ENLARGE THE PROP SHAFT HOLE TO 3/16 (USE DRILL PRESS IF AVAILABLE). INSERT 1/2 IN. LENGTH OF PLASTIC TUBING AS SHOWN. TURN SPINNER AND SHOT FOR PROP AS SHOWN. NOTE 3/16 PLY PROP DISC WHICH HELPS MAINTAIN SIZE OF SPINNER.



FUSELAGE TOP VIEW



FUSELAGE - SIDE VIEW



COLOR SCHEME
OVERALL COLOR ALUMINUM
INBOARD SECTION OF WING - BRASS
OUTSIDE OF WING - BRASS
VERT. STAB RED, WHITE, BLUE
TAIL SECT. ROOD

REFERENCE:
THE SPEED SEEKERS - THOMAS FENNERTH
THE AIR RACER - CHARLES A. NEUBENHALL
ON MINIATURE WINGS - THOMAS J. DIETZ

VERVILLE-SPERRY R-3
1929 PUTTER RACE WINNER 23RD SPAN
23RD NINE SPAN SCALE: 3/4 IN. = 1 FT. DIM.
DRAWN BY JOHN W. BELL, 1976